

# HJS-ECU



**HJS ECU-compatible USB-serial adapter**

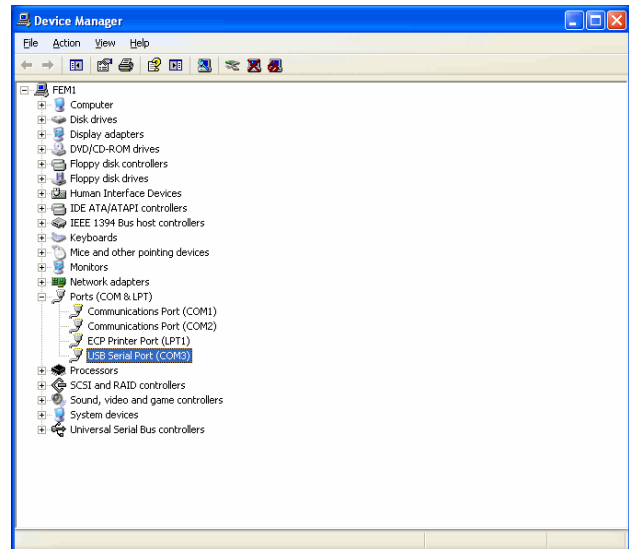


## HJS ECU-compatible USB-serial adapter

Adapters successfully tested to date:

- Digitus USB 2.0 To RS232 Adapter (DA-70146 / EAN: 4016032170426)
- Conrad USB-Modem-Adapter (Nr. 982417-62)

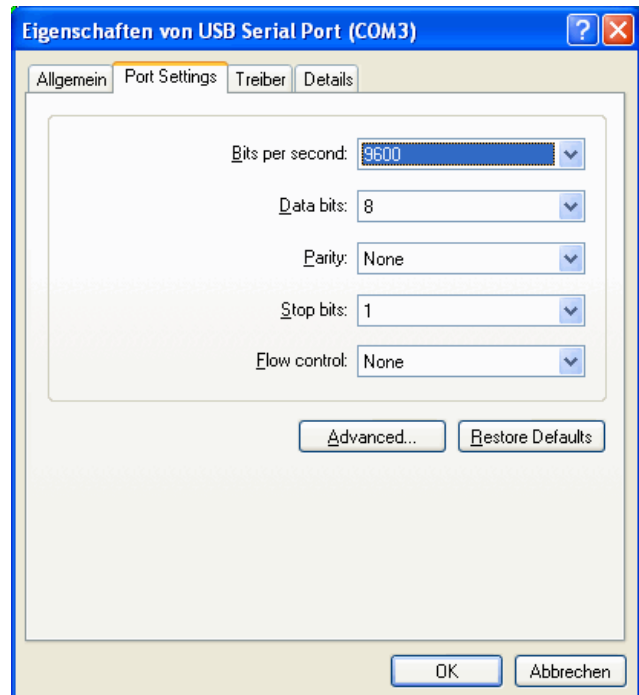
After installing the driver software and connecting the adapter to a USB port, you then have to open the Device Manager in the Windows Control Panel and set the USB serial port under "Ports (COM & LPT)". In most cases, you will also need to make an entry under "Universal Serial Bus controllers".



Choose one of the two entries and right-click it to open the "Properties" popup menu.

Select the "Port Settings" tab. The "Bits per second" (baud rate) and "Flow control" settings can be left as they are because the diagnostics software overwrites them with the values required during runtime.

To change settings, click the "Advanced..." button to open the "Advanced Settings for COMx" popup menu (where x stands for the number of the COM port). The advanced settings differ depending on the manufacturer and from driver to driver.



## Advanced settings of the Digitus USB 2.0 To RS232 Adapter



Following installation, all the settings are set to their default. All you need to change is the "Latency Timer (msec)" setting.

Reduce the setting from 16 ms to 12 ms. Optionally, reset the port (under "COM Port Number") to any other free port.

The diagnostics software accepts ports COM1 to COM8.

## Advanced settings of the Conrad USB Modem Adapter



### Advanced Settings for COM4

You can leave the default settings as they are.

**Advanced Settings for COM4** [?] [X]

☒ **Use FIFO buffers (requires 16550 compatible UART)**

Select lower settings to correct connection problems.  
Select higher settings for faster performance.

**Receive Buffer:** Low (1) [Slider] High (14) (14)

**Transmit Buffer:** Low (1) [Slider] High (16) (16)

COM Port Number: **COM4** [v]

OK  
Cancel  
Defaults